



CITY OF SAN ANTONIO
EDWARDS AQUIFER
PROTECTION PROGRAM

Conservation Advisory Board

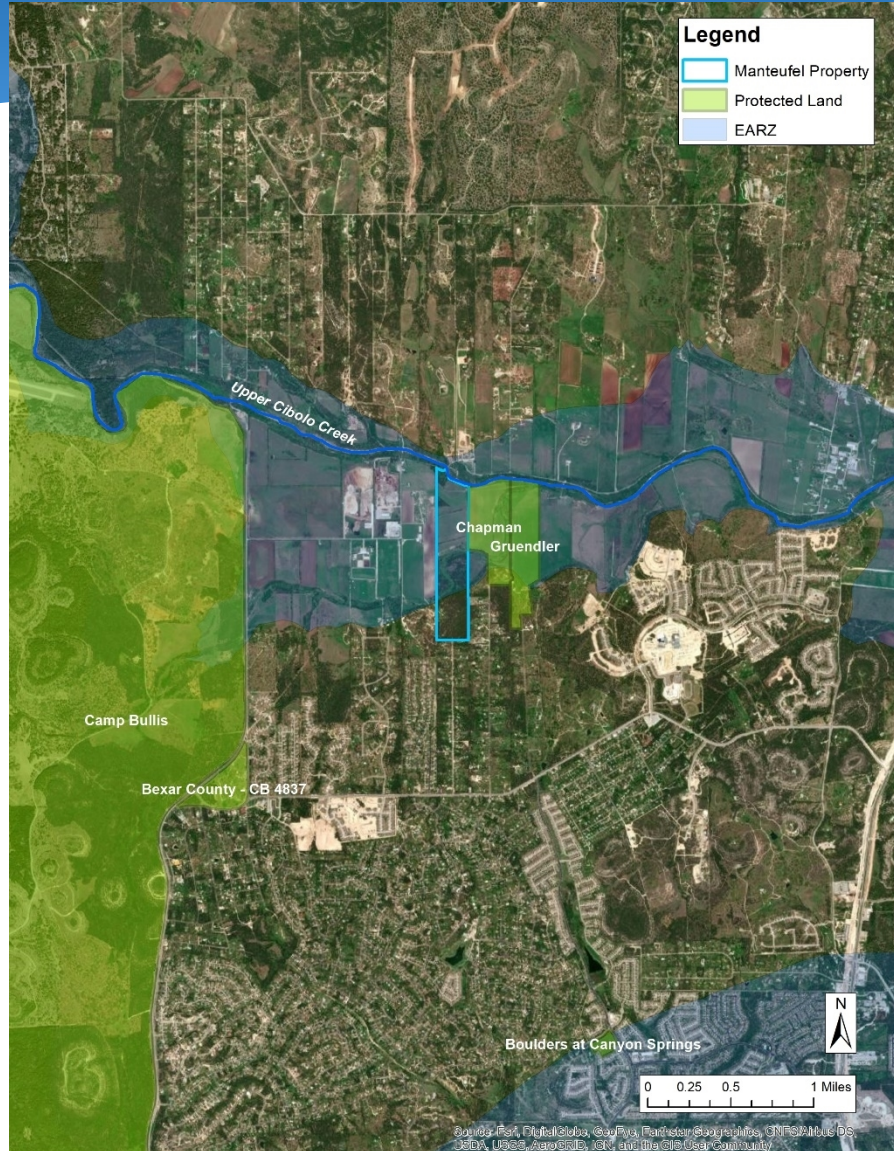
December 1, 2021



GREEN
SPACES
ALLIANCE
OF SOUTH TEXAS

Manteufel & Curd Ranches

Manteufel Property (~100 acres) Bexar County



Manteufel Property (~100 acres) Bexar County

- ~100 acres
- ~90% EARZ
- Top 20% SET
- Includes Cibolo and Meusebach Creeks
- Adjacent to Chapman CE
- High to very high water quantity
- Moderate to high water quality
- Proposed 21-acre carve out
- **Stage 2 approved 8/2020**



Curd Ranch (~363 acres) Medina County



Curd Ranch (~363 acres) Medina County

- 100% in EARZ
- Top 80% of SET model
- SW of Medina Lake
- Several known karst features in the area
- Medina River watershed
- High water quality and quantity benefits
- **Stage 1 approved 1/2021**

